

# Commercial Colour Schemes



**Scheme 1**

Rumba	Soft Apricot
	Nectar
	Brilliant White
Brick	Chrysanthemum

**Scheme 2**

Flamenco	Strawberry Dawn
	Bazaar
	Oxblood
Ruby	Beechleaf



**Scheme 3**

Satsuma	Champagne
	Peach Blush
	Brilliant White
Copper	Clementine

**Scheme 4**

Suede	Soft Barley
	Couscous
	Nightingale
Pepper	Marmalade

**Scheme 5**

Secret Garden	Soft Green
	Pastel Green
	Brilliant White
Grass Green	Autumn Green

**Scheme 6**

Neptune	Soft Lichen
	Lichen
	Evergreen
Dark Green	Lewis

**Scheme 7**

Andante	Sonnet
	Silver Birch
	Brilliant White
Pinehurst	Ripe Fern

**Scheme 8**

Pinehurst	Spearmint
	Mint
	Evergreen
Neptune	Ocean

**Scheme 9**

Tosca	Eros
	Lunar Blue
	Brilliant White
Denim	Bouquet

**Scheme 10**

Mediterranean	Florence
	Moody Blue
	Oxford Blue
Peacock	Danube

**Scheme 11**

Wisteria	Mirage
	Merlewood
	Brilliant White
Pompadour	Ravish

**Scheme 12**

Crushed Velvet	Hyacinth
	Coral Mist
	Nubian
Tokay	Wisteria

**Scheme 13**

Mulberry	Soft Pink
	Cordialle
	Brilliant White
Raspberry	Hot Pink

**Scheme 14**

Plum	Daphne
	Coffee Cup
	Damson
Viola	Mulberry

**Scheme 15**

Pepper	Soft Gazelle
	Aran
	Brilliant White
Biscuit	Fudge

**Scheme 16**

Pecan	Ellastone
	Nu-Stone
	Nightingale
Treacle	Suede

**Scheme 17**

Sinatra	Florence
	Misty Grey
	Brilliant White
Oxford Blue	Tosca

**Scheme 18**

Lewis	Soft Apricot
	Lichen
	Evergreen
Dark Green	Ripe Fern

**Scheme 19**

Bazaar	Champagne
	Moody Blue
	Brilliant White
Bugle Blue	Rumba

**Scheme 20**

Plum	Soft Lichen
	Merlewood
	Damson
Tokay	Columbine

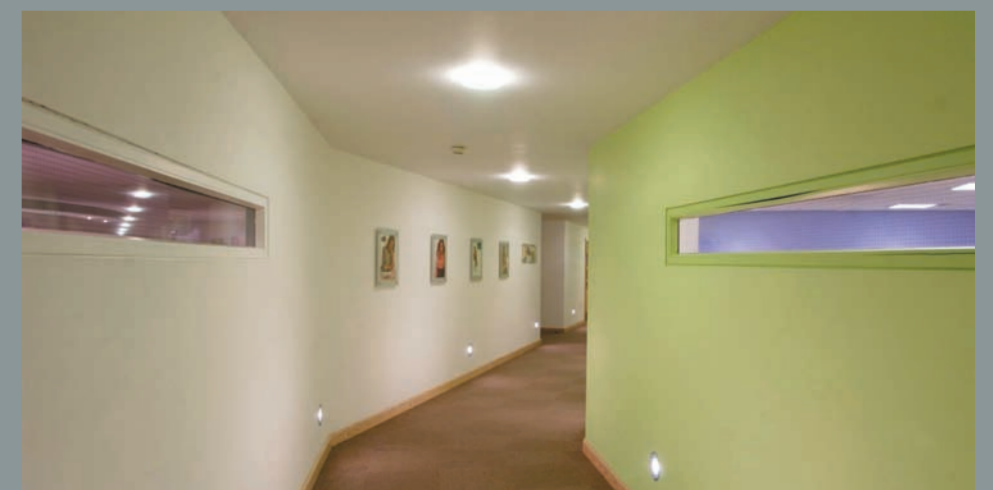


**Scheme 21**

Plum	Eros
	Nectar
	Oxford Blue
Bazaar	Tosca

**Scheme 22**

Ravish	Pale Primrose
	Pixie
	Brilliant White
Pinehurst	Tokay



These colour schemes show colours of a similar hue that will go together and will therefore form an ideal colour scheme. All colours within a scheme are interchangeable and allow the use of feature or accent colours from another group, ie, colours from schemes 11 and 12 can be used with schemes 6, 7 & 8; colours from schemes 13 & 14 can be used in schemes 1, 2 & 3; blues in schemes 9 & 10 can be used with schemes 15 & 16.

Lower wall colours may be used as feature walls. The strongest door colour could be applied to major access doors and primary rooms, whilst lighter door colours could be used on less important locations.

Schemes 1, 2, 3 & 4 are ideal for north facing rooms.  
Schemes 7, 8, 9 & 10 are ideal for south facing rooms.  
Schemes 15 & 16 are neutral and would be ideal in areas where feature colours already exist in furnishings and floor coverings.

### Key:

Doors	Upper wall area
	Lower wall area
	Skirting
Other door colours	Other door colours



**Decorative Coatings UK and Ireland**  
SigmaKalon UK Limited  
Huddersfield Road, Birstall, Batley, West Yorkshire, WF17 9XA  
Telephone: 01924 354000 Facsimile: 01924 354001

Johnstone's products are manufactured under a quality system approved by the B.S.I.  
Johnstone's is a trademark of SigmaKalon UK Limited

Although every effort is made to ensure accurate colour representation, due to the limitations of the printing process, the colours shown on this page may not be true representations of the actual colours and are meant as a guide only.